

Sign language research in Hamburg takes place in close cooperation between three faculties:



Institute of German Sign Language and Communication of the Deaf



Language laboratory

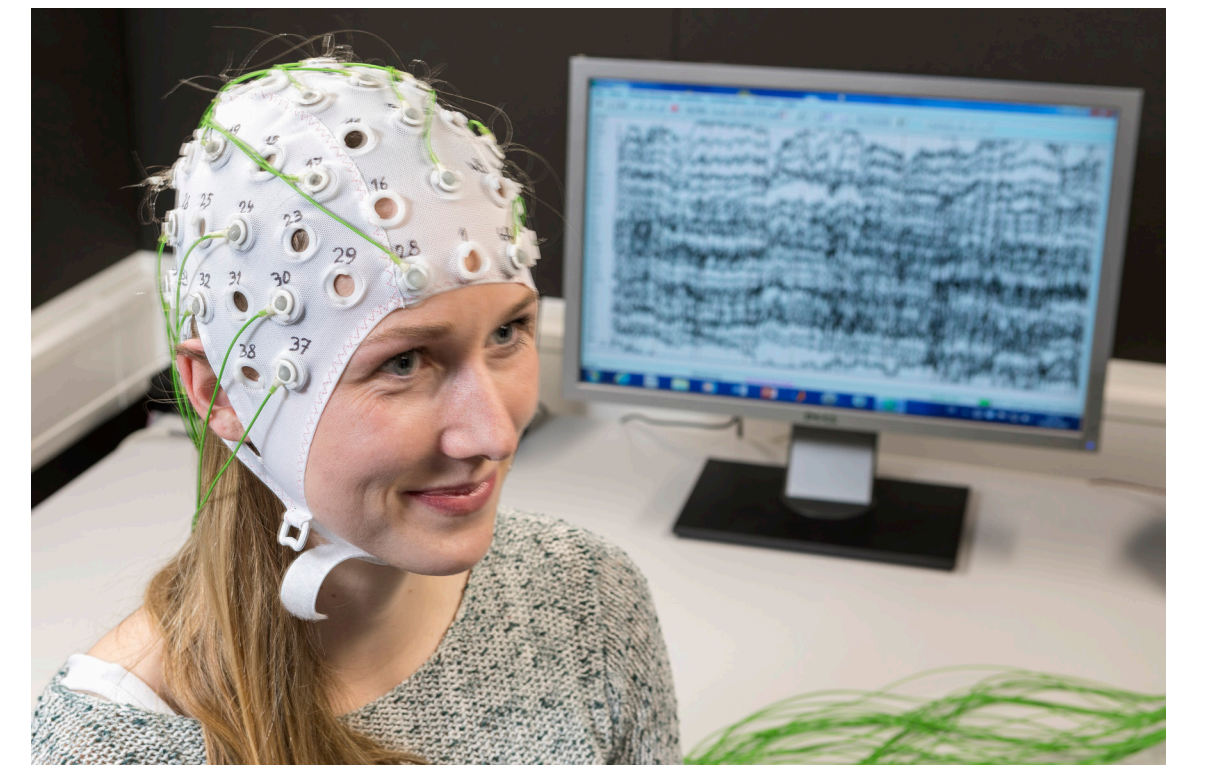


Department of Special Needs Education – Deaf Education

## Faculty of Humanities

Institute of German Sign Language and Communication of the Deaf

- Sign Languages and Sign Language Interpreting (BA/MA and Research)
- DGS Corpus: DGS Corpus is a long-term project of the Academy of Sciences in Hamburg for the documentation of and research on DGS
- Experimental SignLab Hamburg: EEG and Eye Tracking
- Life stories of elderly Deaf people in Germany, SignHub, EU-project
- Theoretical, empirical, experimental and applied sign language research and interpreting studies



Experimental research



Department of Biological Psychology and Neuropsychology



Applied research

- Bimodal-bilingual language acquisition and processing in different learner groups
- Lexical access in Deaf children
- The impact of signs in nursery schools on children's social interaction
- Early mathematical competencies in Deaf signing children
- Psychological well-being of Deaf and hard of hearing students and its relation to school system and language setting

## Faculty of Education

Education of the Deaf and Hard of Hearing

- Neural bases of sign language processing
- Motor learning in Deaf and hearing signers
- Balance and mental rotation abilities in Deaf signers
- Temporal processing characteristics of the visual and somatosensory system in Deaf and hearing signers
- Multisensory processing in Deaf and hearing signers

## Faculty of Psychology and Human Movement

Biological Psychology and Neuropsychology

**Research funding:** Academy of Sciences and Humanities in Hamburg • Alexander von Humboldt Foundation • European Research Council (ERC) • Federal Ministry of Education and Research (BMBF) • Federal Ministry of Labour and Social Affairs (BMAS) • Gender equality funds, Universität Hamburg • German Research Foundation (DFG) • Horizon 2020 – Framework Programme of the European Union • Integration office Hamburg • Ministry of Schools and Vocational Training Hamburg (BSB)

### Contact

Prof. Dr. Annika Herrmann, Institute of German Sign Language and Communication of the Deaf, [annika.herrmann@uni-hamburg.de](mailto:annika.herrmann@uni-hamburg.de)

Prof. Dr. Barbara Hänel-Faulhaber, Education of the Deaf and Hard of Hearing, [barbara.haenel-faulhaber@uni-hamburg.de](mailto:barbara.haenel-faulhaber@uni-hamburg.de)

Prof. Dr. Brigitte Röder, Biological Psychology and Neuropsychology, [brigitte.roeder@uni-hamburg.de](mailto:brigitte.roeder@uni-hamburg.de)