

# Sign language dictionary as a digital tool in L2 teaching

## Sentence scoring on CEFR levels A1–B2

Thomas Björkstrand, Eira Balkstam & Josephine Willing  
Department of Linguistics, Stockholm University

### Method

Based on CEFR level and the language ladder, various grammatical properties (e.g. non-manual negation), word classes (e.g. verbs), clause types (e.g. declarative), and number of signs were included in each example sentence.

Each grammatical property has been assigned a score. By tallying the total score of a sentence, it is possible to assign it to a specific CEFR level based on a pre-established scoring range per level.

We have tentatively defined the levels A1–B2 as follows:  
A1 = 1–4 points; A2 = 5–15 points; B1 = 16+ points; B2 = ?

### BA program in sign language and interpreting

- The first 3-year BA program (180 ECTS) was started in the fall of 2013
- The program consists of theoretical and practical courses in and about Swedish Sign Language, but also courses on interpreting between Swedish and Swedish Sign Language
- The main aim is for students to develop their practical skills in Swedish Sign Language as an L2 during two years

### CEFR for sign languages

- Practical teaching is adapted to CEFR definition of L2 skills in terms of production, comprehension, and conversation (CEFR=Common European Framework of Reference for Languages)

- The scale has three levels, each with two sublevels:

A1–A2 = basic user  
B1–B2 = independent user  
C1–C2 = proficient user

- PRO-Sign has developed CEFR as applied to sign languages

(<https://www.ecml.at/ECML-Programme/Programme2012-2015/ProSign/PRO-Signreferencelevels/tabid/1844/Default.aspx>)

### Language ladder



- Level 6 Text and discourse level (fluency, tempo, metaphors)
- Level 5 Text level (e.g. viewpoints)
- Level 4 Phrase/clause level (e.g. buoys, token, clause types)
- Level 3 Modification in signing space, morphological processes, ...
- Level 2 Signs based on the knowledge of the four parameters, both fixed and depicting, and phonological awareness, ...
- Level 1 Modality (e.g. eye and body contact, gestural and bodily awareness, simultaneity, signing space)

### Swedish Sign Language Dictionary

- Publicly available for free online December 18th, 2008
- Updated online in September 2014
- 18,633 signs (22,000 signs collected)
- 4,561 example sentences
- Continuously updated with new functionality
- Several search functions available

BA program in sign language and interpreting

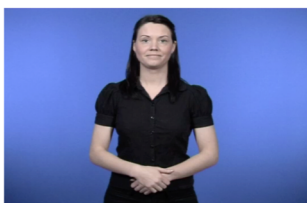
CEFR for sign languages

Language ladder

Swedish Sign Language Dictionary

Sign language dictionary as a digital tool in L2 teaching

### Example sentence at the A1 level



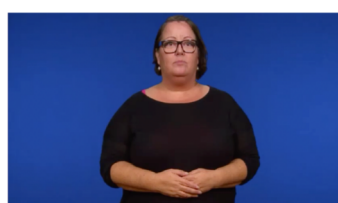
Metoder	Nej	0
Normal tempo	Ja	0
Perpektiv	Nej	0
Enkelt menande	Nej	0
Infällighet	Nej	0
Intonering	Nej	0
Met	Nej	0
Teckensvaret	Nej	0
Teckenspråklig struktur	Ingen	0
Gensatt tecken	Nej	0
Negation	Nej	0
Hjälpverb	Nej	0
Avslutande verb	Nej	0
Pretering	Nej	0
Siffertecken	Nej	0
Reklamering	Nej	0
Satstyp	Enkelt påbörjande satser	1
Summa	1	A1

### Example sentence at the A2 level



Metoder	Nej	0
Normal tempo	Ja	0
Perpektiv	Nej	0
Enkelt menande	Ja	0
Infällighet	Nej	0
Intonering	Nej	0
Met	Nej	0
Teckensvaret	Likabehandling	1
Teckenspråklig struktur	Ingen	0
Gensatt tecken	Nej	0
Negation	Nej	0
Hjälpverb	Nej	0
Avslutande verb	Nej	0
Pretering	Indistinkt pretering	2
Siffertecken	Nej	0
Reklamering	Nej	0
Satstyp	Topplikallade satser	4
Summa	7	A2

### Example sentence at the B1 level



Metoder	Nej	0
Normal tempo	Ja	0
Perpektiv	Nej	0
Enkelt menande	Ja	2
Infällighet	Nej	0
Intonering	Nej	0
Met	Nej	0
Teckensvaret	Token	0
Teckenspråklig struktur	E typ	2
Gensatt tecken	Avvarorad	4
Negation	Nej	0
Hjälpverb	Hjälperb	2
Avslutande verb	Nej	0
Pretering	Nej	0
Siffertecken	Nej	0
Reklamering	Nej	0
Satstyp	Komplexa påbörjande satser	6
Summa	18	B1

- This development work is highly important – not only for hearing L2 learners in the BA program, but also for similar sign language courses.
- Through the dictionary, it is possible to retrieve sentences according to the level of interest (targeting one's progress and level of skill).
- The scoring for sentences at the A1, A2, and B1 levels are considered relevant. The next step is to develop and adjust the scoring model.