

# A preliminary investigation of the phonological feature inventory in Kata Kolok, a rural sign language of Bali

Hannah Lutzenberger<sup>1,2</sup>, Onno Crasborn<sup>1</sup>, Paula Fikkert<sup>1</sup> & Connie de Vos<sup>1</sup>

<sup>1</sup> Center for Language Studies (CLS), Radboud University | <sup>2</sup> International Max Planck Research School for Language Sciences (IMPRS)

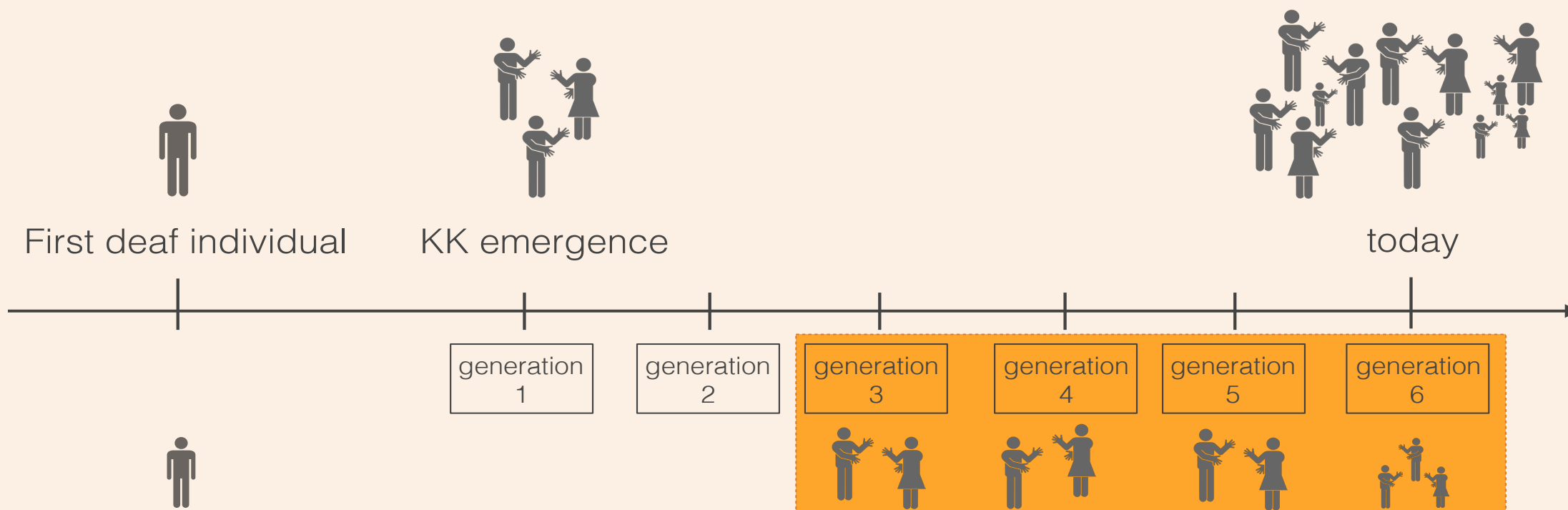
Radboud University

## Kata Kolok (KK)

- spontaneous emergence in a single village community
- time depth at least **six generations**  
> KK is older than e.g. Al-Sayyid Bedouin Sign Language, Israel
- high incidences of **congenital deafness**
- deaf and many hearing villagers use KK daily



Does KK show phonological organisation?



## Field-based Data Collection

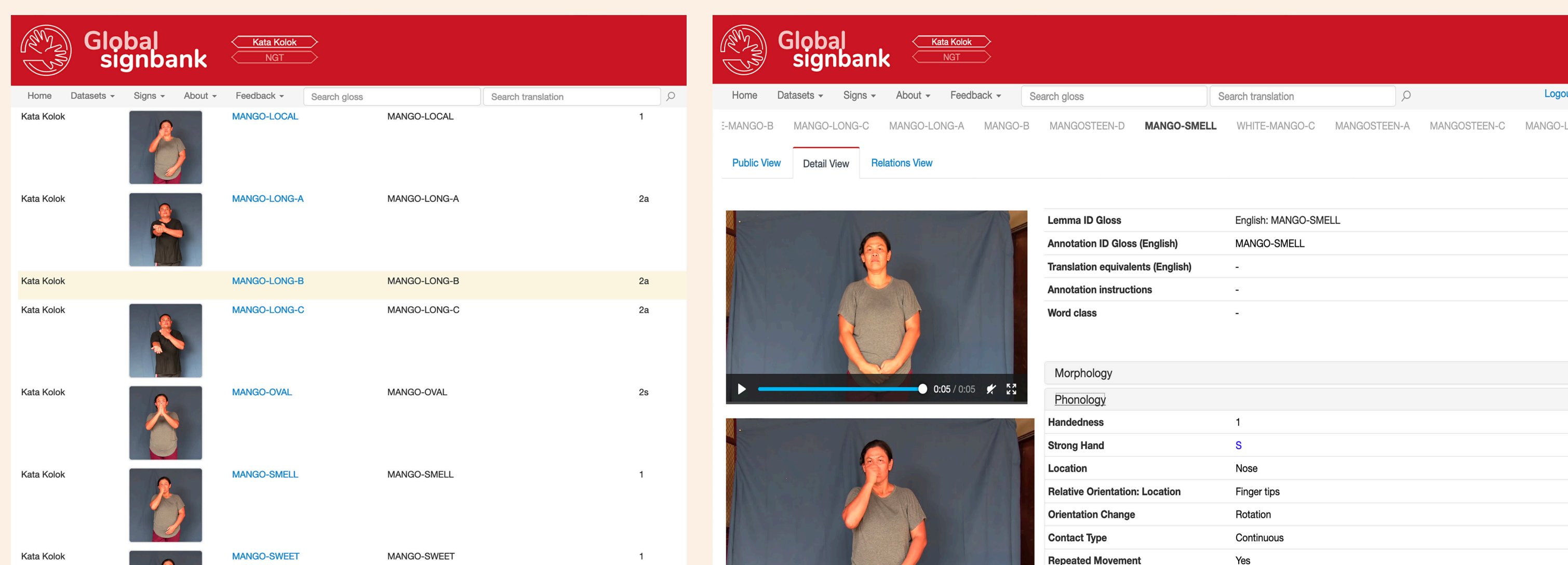
- deaf native signers of generation 3-5
- lexical elicitation (pictures, real objects)
- (semi-)spontaneous conversations
- expert knowledge



## Kata Kolok Dataset in Global Signbank

~1,000 entries with phonological descriptions

in progress:  
link to corpus & identification of phonological contrasts



# KK shows phonological organisation!

## Feature Inventory in the Current Dataset

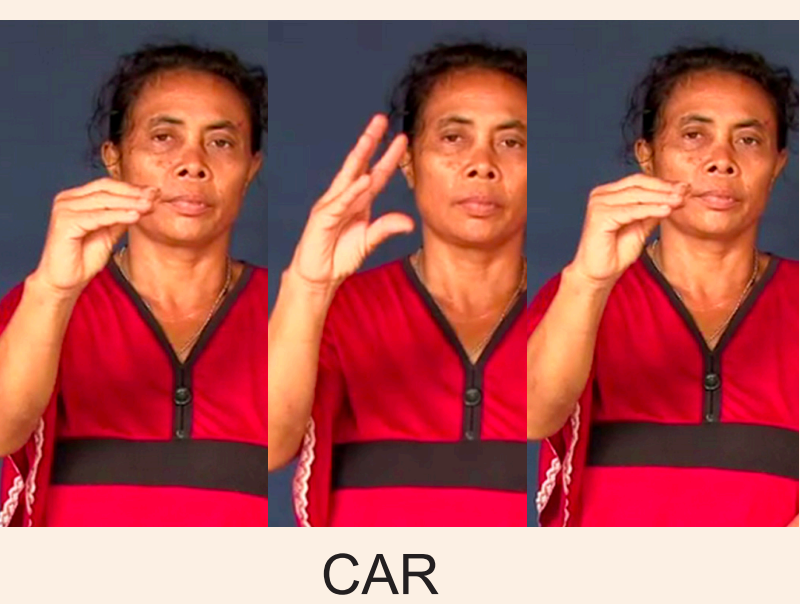
In contrast to Al-Sayyid Bedouin Sign Language, the current Signbank entries include:

### 1) Minimal Pairs



### 2) Formal Constraints

Finger selection



CAR

Symmetry Condition (N=283)



MARRY

Dominance Condition (N=172)



MONEY

### 3) Lower Intersigner Variation

virtually no variation



DOG

lexical variation



PIG-A

PIG-B

PIG-C

high variation



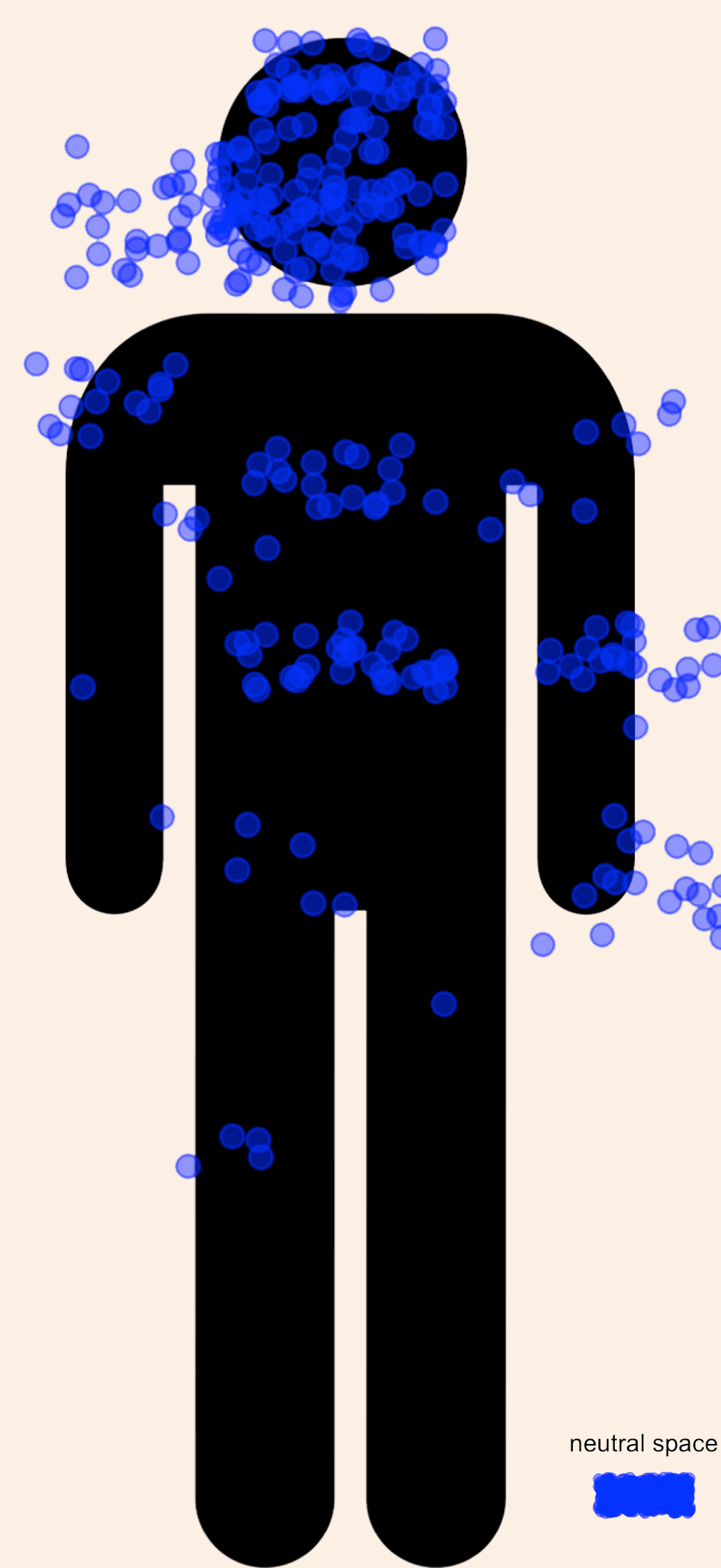
DRAGONFRUIT

Overview from Signbank

### Handshapes (N<10)

- |                   |                                    |
|-------------------|------------------------------------|
| Strong hand (145) | Weak hand in asymmetric signs (64) |
| (127)             | (21)                               |
| (124)             | (18)                               |
| (83)              | (10)                               |
| (71)              |                                    |
| (54)              |                                    |
| (44)              |                                    |
| (42)              |                                    |
| (31)              |                                    |
| (29)              |                                    |
| (15)              |                                    |
| (15)              |                                    |
| (15)              |                                    |
| (13)              |                                    |
| (10)              |                                    |
| (10)              |                                    |

### Locations



## References

Battison, R. (1978). Lexical Borrowing in American Sign Language. Silver Spring: Linstok Press. | de Vos, C. (2012). *Sign-spatiality in Kata Kolok: How a village sign language of Bali inscribes its signing space*. PhD dissertation. Nijmegen: Max Planck Institute for Psycholinguistics. | de Vos, C. (2016). Sampling shared sign languages. *Sign Language Studies* 16(2), 204-226. | Lutzenberger, H. (2018). Manual and nonmanual features of name signs in Kata Kolok and Sign Language of the Netherlands. *Sign Language Studies*, 18(4), 546-569. | Marsaja, G. (2008). *Desa kolok: A deaf village and its sign language in Bali, Indonesia*. Nijmegen: Ishara Press. | Mudd, K., Lutzenberger, H., de Vos, C., Fikkert, P., Crasborn, O., & de Boer, B. (under review). The effect of socio-linguistic factors on sign variation in Kata Kolok. Submitted to a special issue in *Asia-Pacific Language Variation* edited by Nick Palfreyman. | Stokoe, W. (1960). *Sign language structure: an outline of the visual communication systems of the American Deaf*. Buffalo: University of Buffalo Press. | Sandtler, W., Aronoff, M., Meir, I., & Padden, C. (2011). The gradual emergence of phonological form in a new language. *Natural Language & Linguistic Theory*, 29(2), 503-543. | Winata, S., Arihya, L., Moeljopawiro, S., Hinant, J., Liang, Y., Friedman, T., & Asher, J. (1995). Congenital non-syndromal autosomal recessive deafness in Bengkala, an isolated Balinese village. *Journal of Medical Genetics* 32, 336-343.

## Thank you

to all the KK signers who participated,  
to the entire village community,  
to all Signbank models,  
to Calle Börstell.

